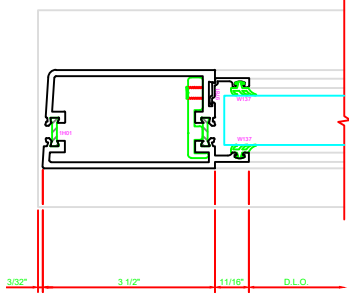
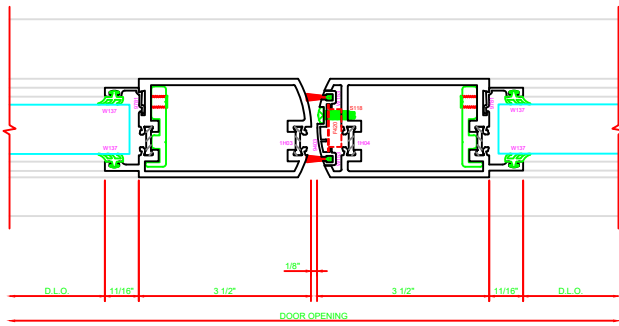


300 STILE  
S/A D302 FOR OFFSET PIVOTS

ERASE NOTE  
BUTT HINGES CAN NOT BE  
USED WITH THERMASTILE  
DOORS

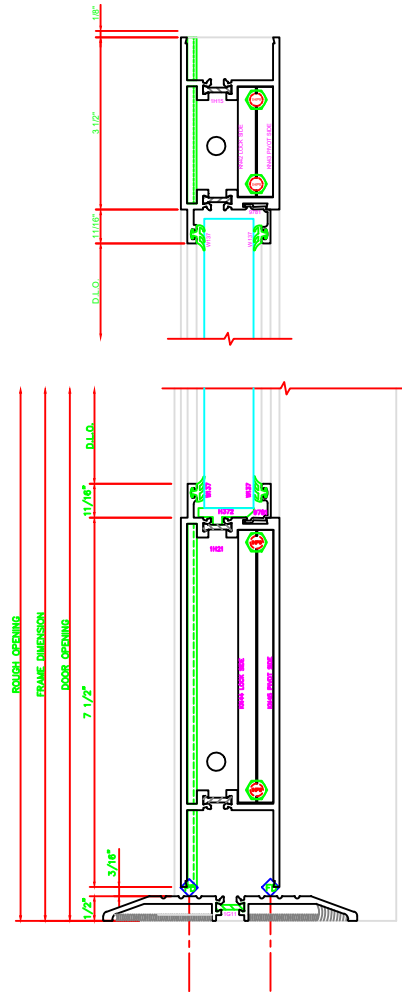
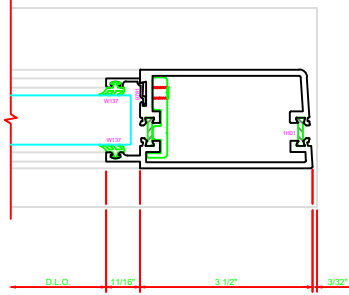


401 MEETING STILES  
D302



301 STILE  
S/A D302 FOR OFFSET PIVOTS

ERASE NOTE  
BUTT HINGES CAN NOT BE  
USED WITH THERMASTILE  
DOORS



100 TOP RAIL  
S/A D302

ERASE NOTE  
TOP RAIL FOR SURFACE CLOSERS  
OR DORMA TYPE C.O.C. NOT LCN  
C.O.C.

200 BOTTOM RAIL  
S/A D302